

# Tools for Measurements & Analysis

---

Robert Kisteleki  
R&D Manager  
[robert@ripe.net](mailto:robert@ripe.net)



# Today's Topics

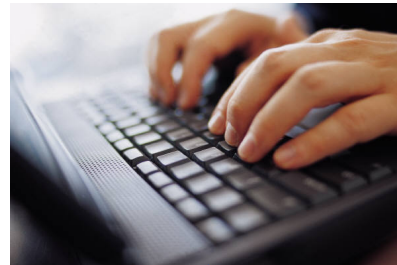
---

- RIPEstat
- RIPE Atlas

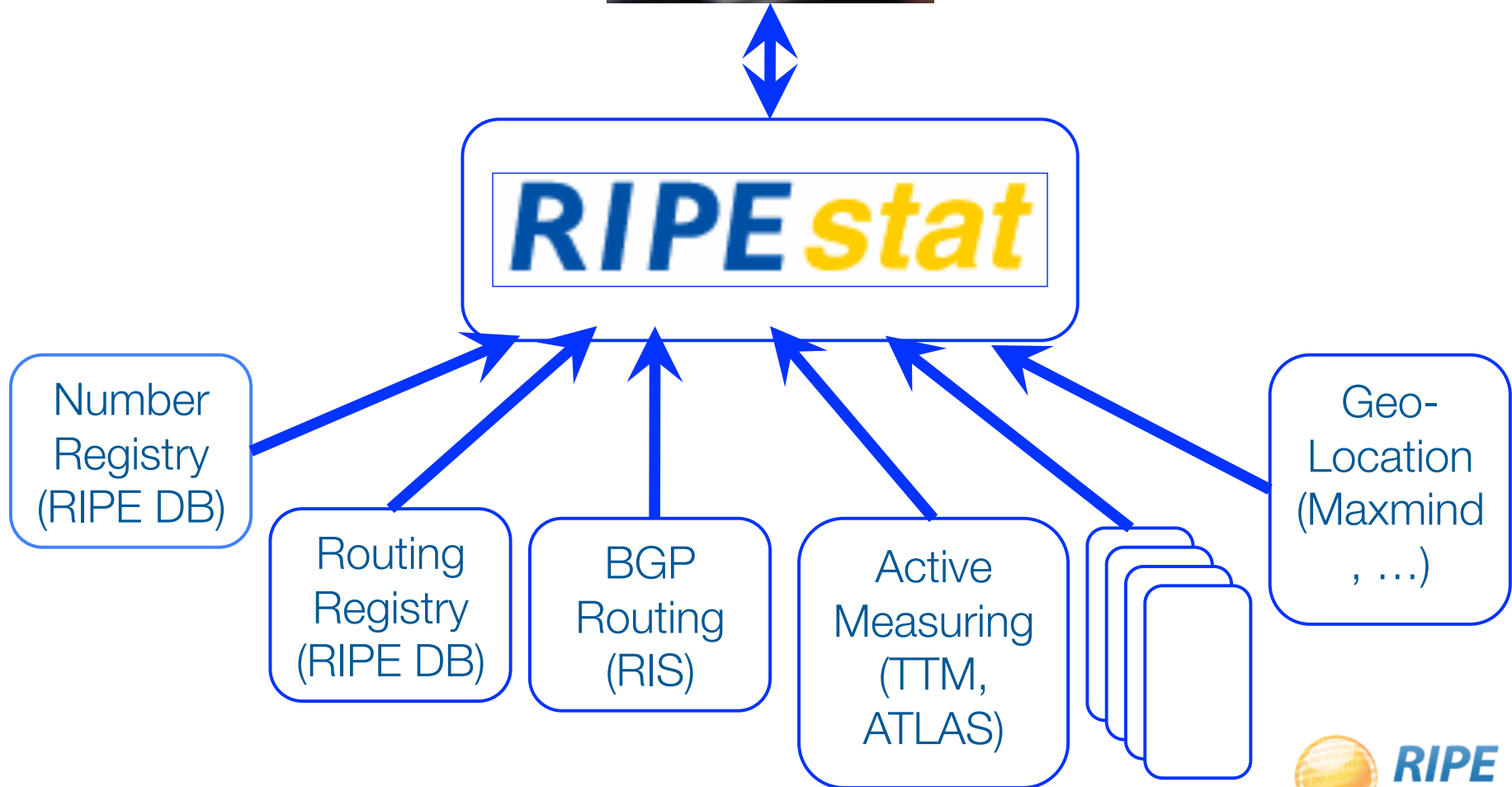
# RIPEstat

---

- “Numbers are Us”: IPv4/IPv6 Addresses, ASNs
- Modular & Extendable Toolbox
- “stat” means
  - Statistics (history, aggregation, zoom)
  - Status (real time, aggregation, zoom)
- Beta: **stat.ripe.net**
- Eventually to replace most measurement tools



You





Resource Information (85.154.160.0/21)

this prefix is currently announced by

**AS28885**

this Autonomous System Number appears to currently be held by

**OMANTEL-NAP-AS OmanTel NAP**

*104 ms / 406 B / c (Ref: Q1045353/6100484 R0)*

Download raw data: [yaml](#)

Show: [link](#) | [specification](#) | [methodology](#)

**Whois Matches (85.154.160.0/21)**

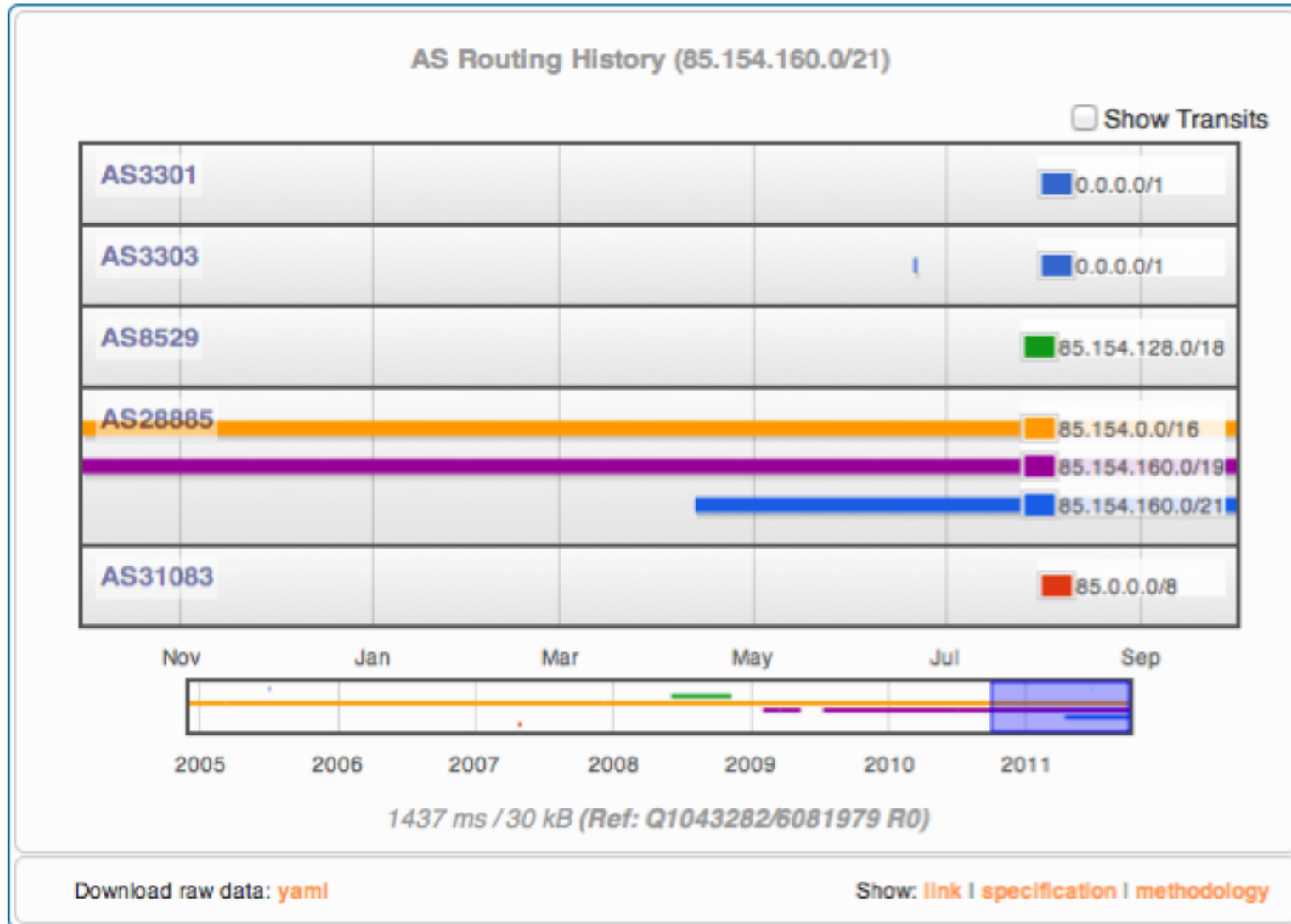
[Show all fields](#)

resource	85.154.160.0 - 85.154.167.255
netname	OMAN-EXP-2004
country	OM
status	ASSIGNED PA
description	PROVIDER

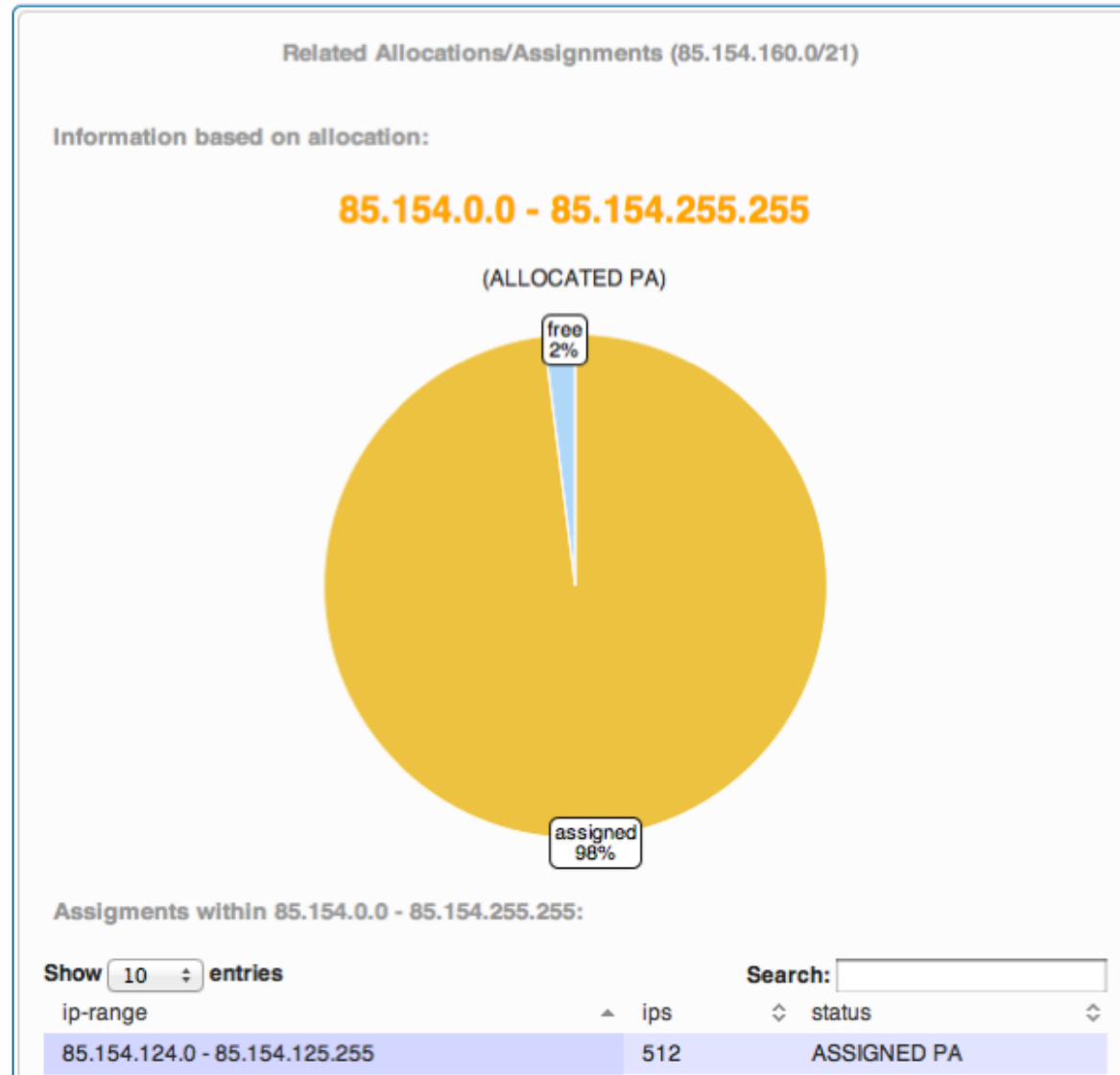
▶ known issues / limitations:

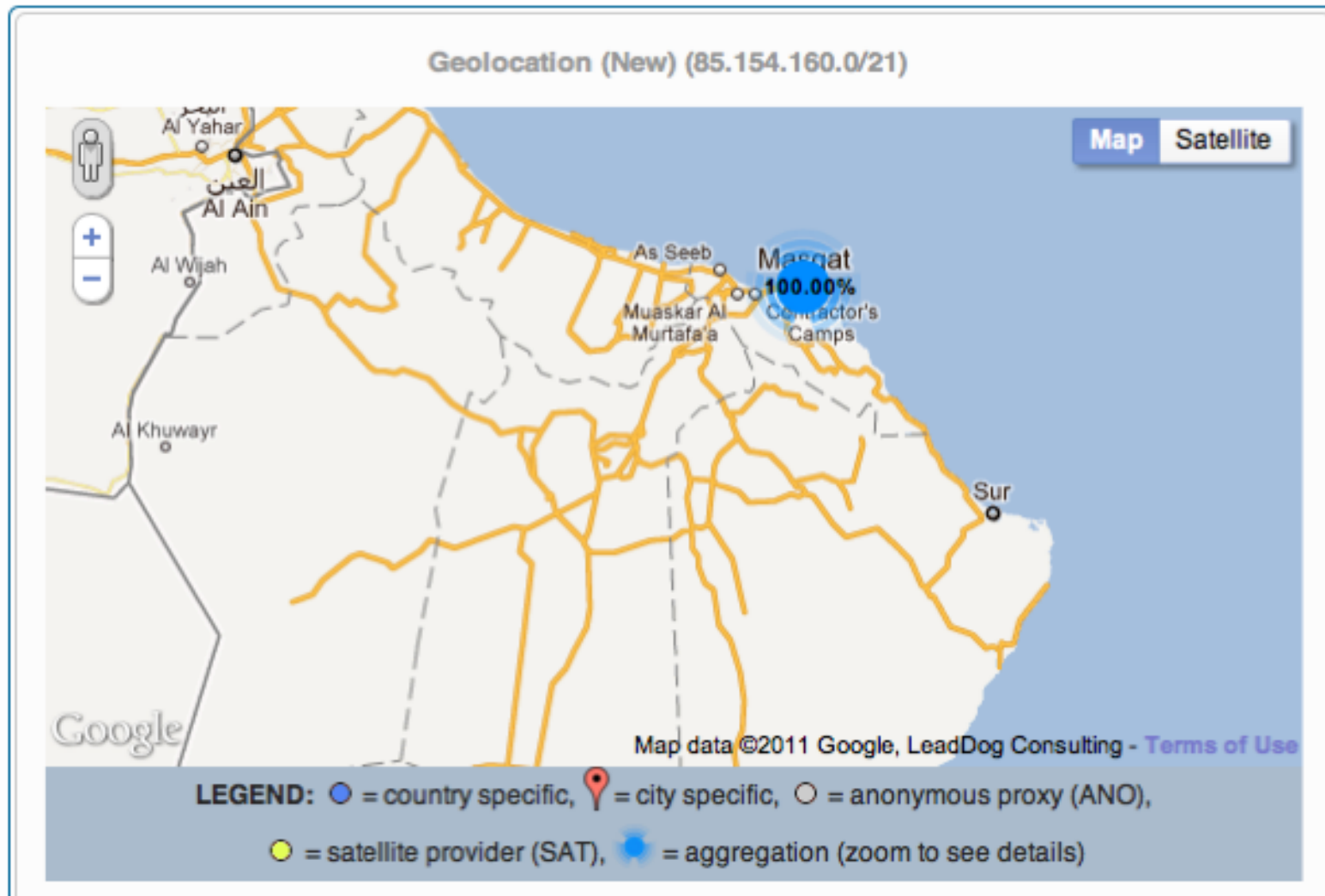
*99 ms / 2 kB / c (Ref: Q1045353/6100485 R0)*

Download raw data: [yaml](#) Show: [link](#) | [specification](#) | [methodology](#)









BGP Looking Glass (85.154.160.0/21)

Search:

**Amsterdam, Netherlands (RRC00)**

3333 8529 28885, (aggregated by 28885 62.231.255.121)  
193.0.0.56 from 193.0.0.56 (193.0.0.56)  
Origin incomplete, localpref 100, valid, external, atomic-aggregate, best  
Community: 8529:10 8529:30  
Last update: Thu Sep 22 13:33:12 2011

⌵ Show more (18)

**London, United Kingdom (RRC01)**

42708 8529 28885, (aggregated by 28885 62.231.255.121)  
195.66.225.159 from 195.66.225.159 (80.67.4.5)  
Origin incomplete, localpref 100, valid, external, atomic-aggregate, best  
Last update: Tue Sep 13 21:37:05 2011

⌵ Show more (13)

**Amsterdam, Netherlands (RRC03)**

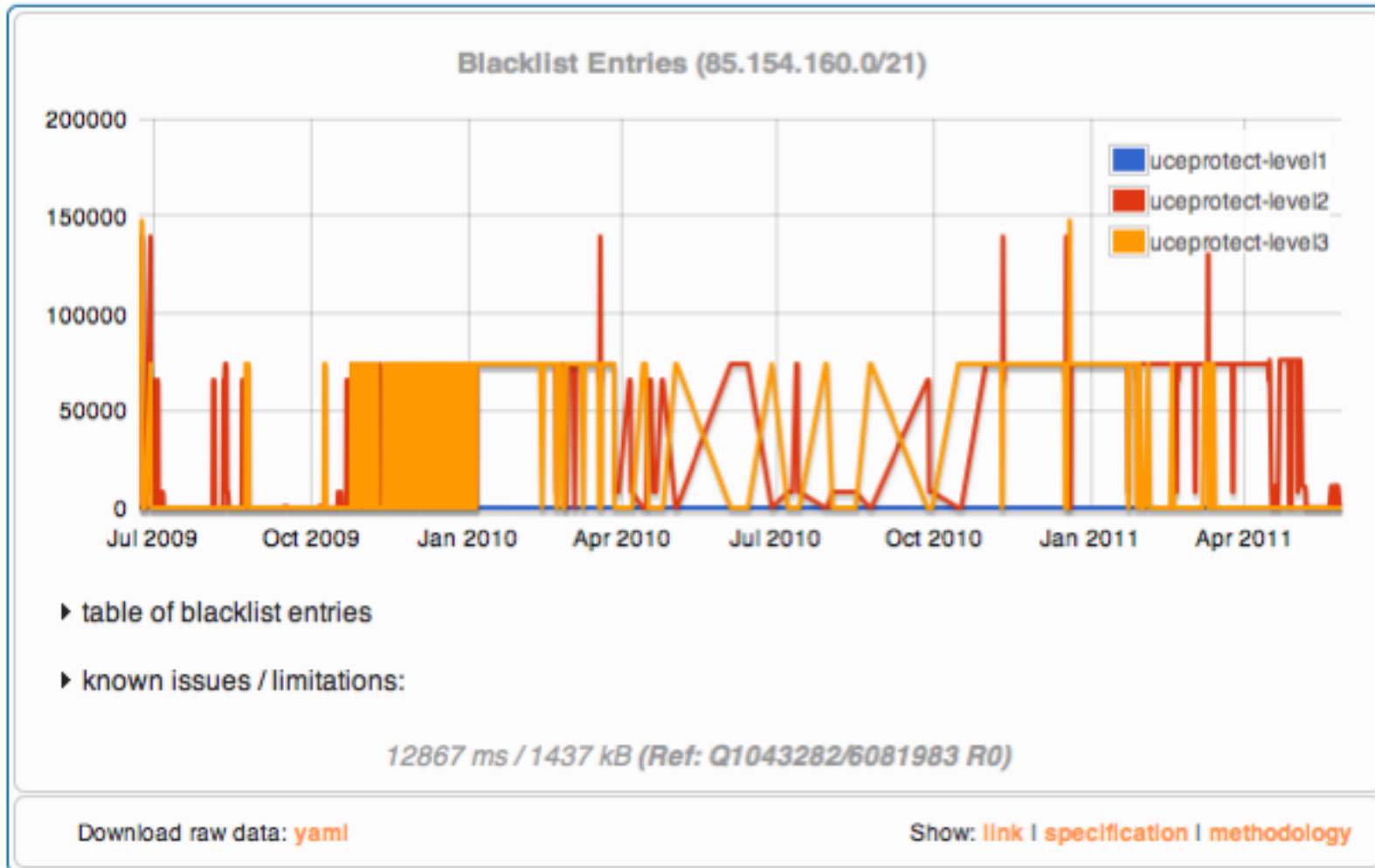
1103 8529 28885, (aggregated by 28885 62.231.255.121)  
195.69.144.30 from 195.69.144.34 (145.145.127.8)  
Origin incomplete, localpref 100, valid, external, atomic-aggregate, best  
Community: 1103:1000 8529:10 8529:30  
Last update: Tue Sep 13 21:36:46 2011

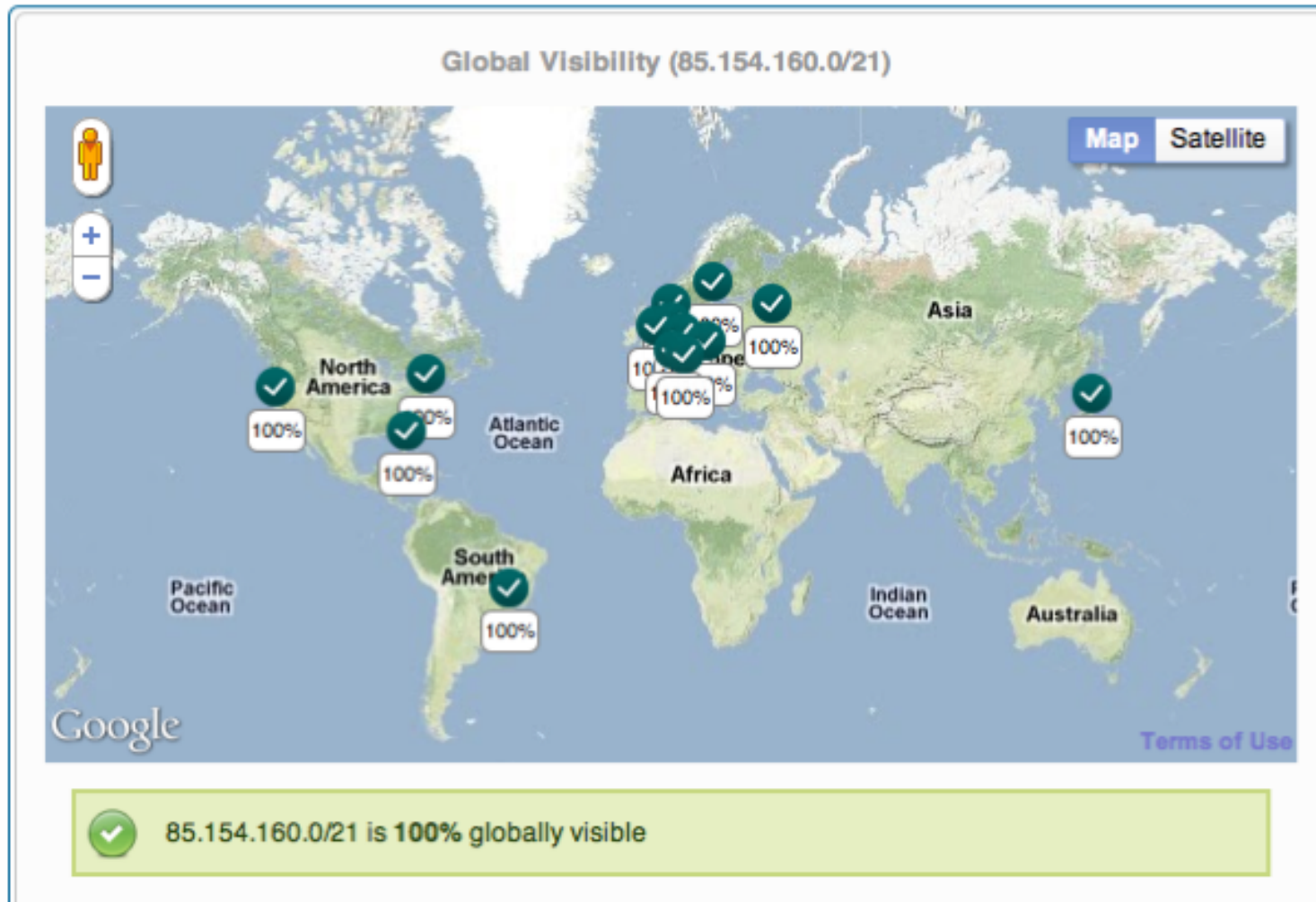
⌵ Show more (8)

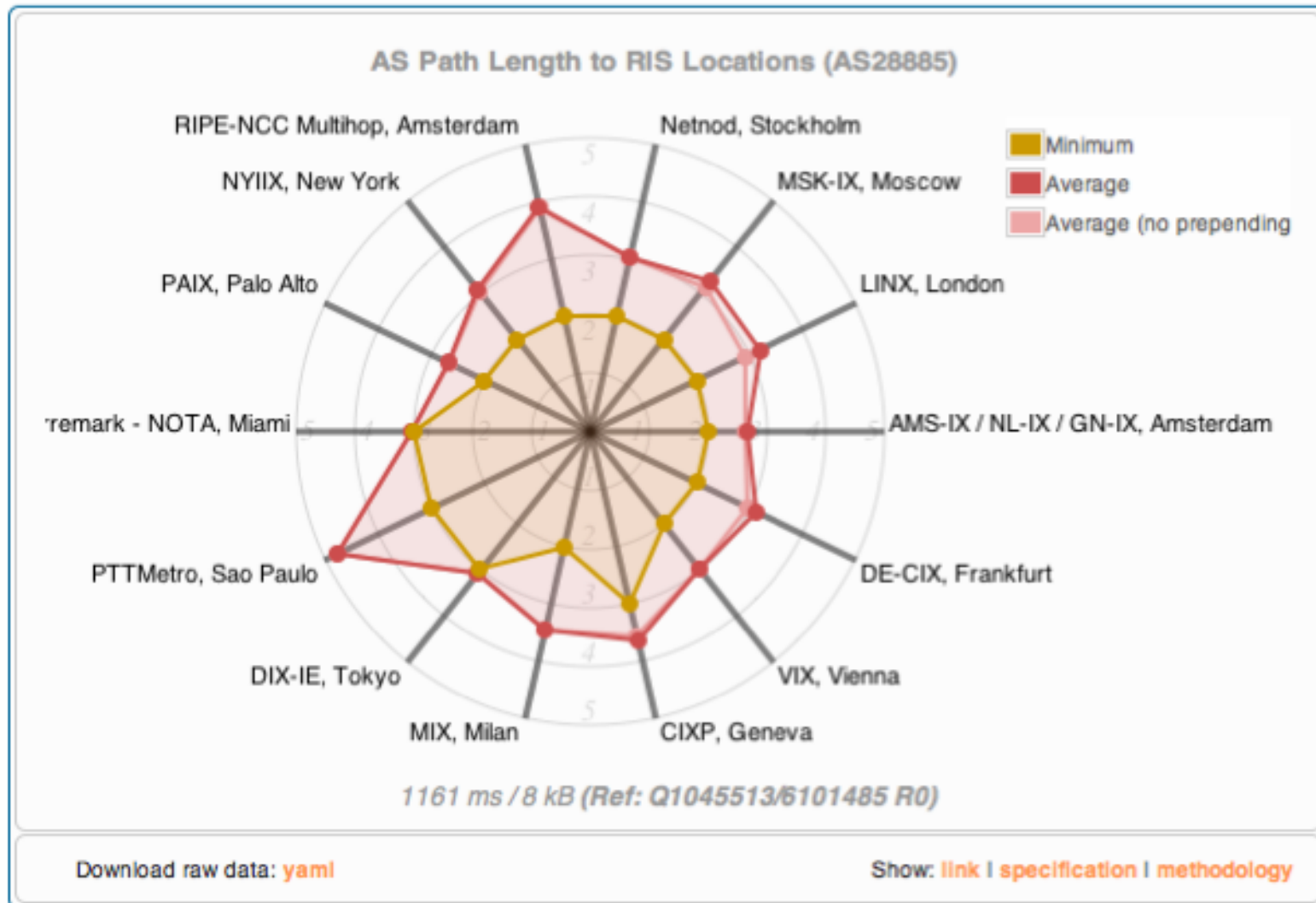
**Geneva, Switzerland (RRC04)**

29222 286 8529 28885, (aggregated by 28885 62.231.255.121)  
192.65.185.140 from 192.65.185.140 (84.16.64.30)  
Origin incomplete, localpref 100, valid, external, atomic-aggregate, best  
Last update: Wed Sep 14 17:52:14 2011

⌵ Show more (5)







# RIPEstat Strategy

---

- Immutable, sharable URLs for each result
- Add more history
- Multiple output formats (command line tool?)
- **Eventually integrate current RIPE NCC tools**

# RIPEstat Regular Public Demos

---

- Modular design --> agile development
- We demo new functionality every 4 weeks
  - we receive comments and feedback
- We monitor usage, ... and you can too
- Based on usage and feedback we will adjust
- You get the tools you deserve: get involved!
  
- *Please do not consider the demos as finished !*



## News

- **Upcoming 9th public demo**
- **Egyptian Network Outage**
- **Japanese Earthquake**

## RIPEstat Development

- **Introduction to Demos**
- **25 January 2011** **HD** **SD**
- **22 February 2011** **HD** **SD**
- **22 March 2011** **HD** **SD**
- **19 April 2011** **HD** **SD**
- **17 May 2011** **HD** **SD**
- **14 June 2011** **HD** **SD**
- **12 July 2011** **HD**
- **6 September 2011** **HD** **SD**
- 4 October 2011
- 1 November 2011
- 29 November 2011
- 27 December 2011

# Today's Topics

---

- RIPEstat
- RIPE Atlas

# Introduction

---

## RIPE Atlas:

- There are many Atlases, this is *RIPE Atlas*
- next generation Internet measurement network
  - To scale to thousands of measurement nodes
  - Potentially “be everywhere” and ready to run different measurements
  - Started last November, we’re still just building it and exploring possibilities

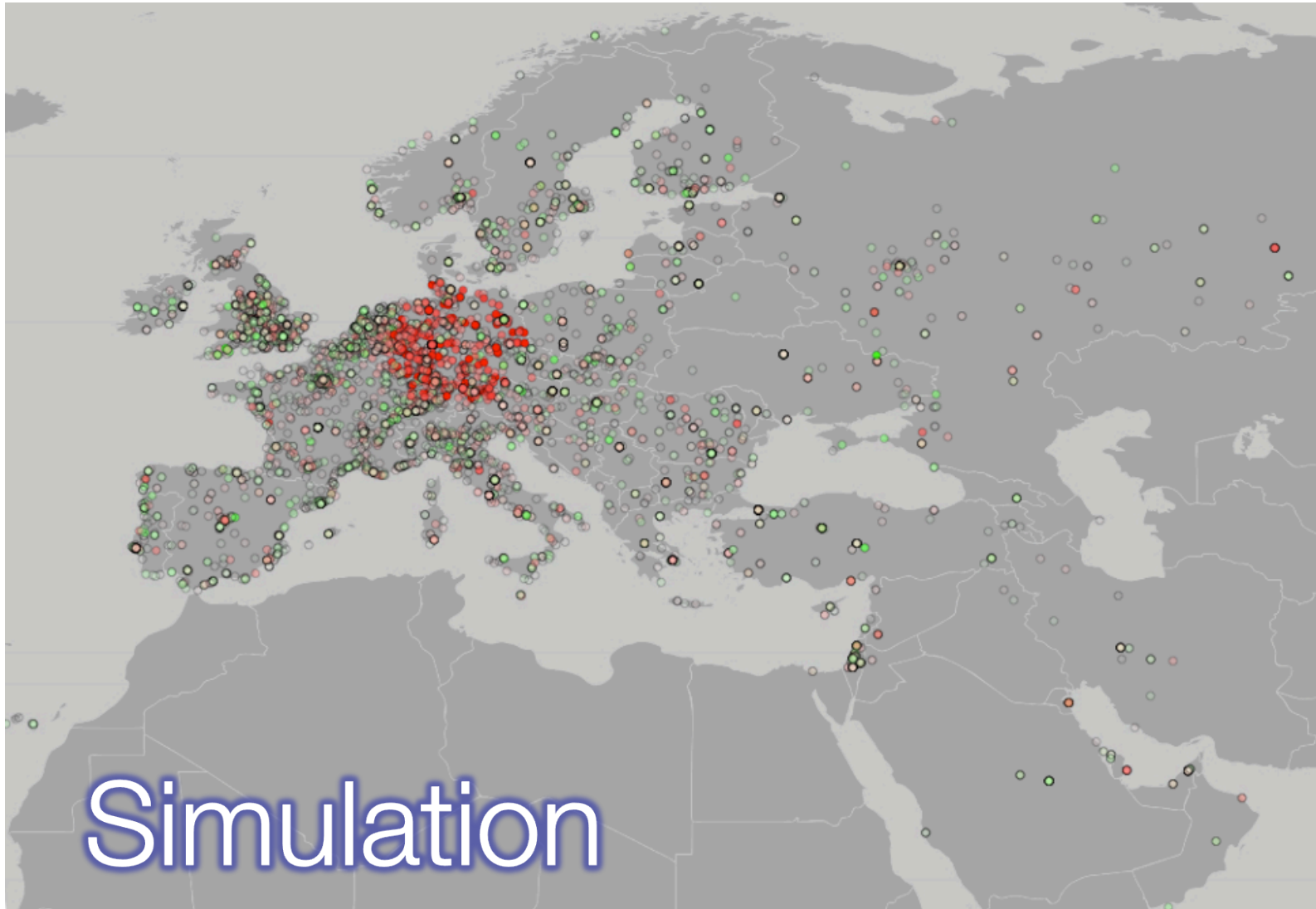
# Light Map of Europe

---



# Intuition: 10k Probes & 1 AS

---



# Ambitious Community Effort

---

Instead of building small, separate,  
individual & private infrastructures,  
build a  
huge common infrastructure  
that serves *both* the private goals  
*and* the community goals.

# Ambitious Community Effort

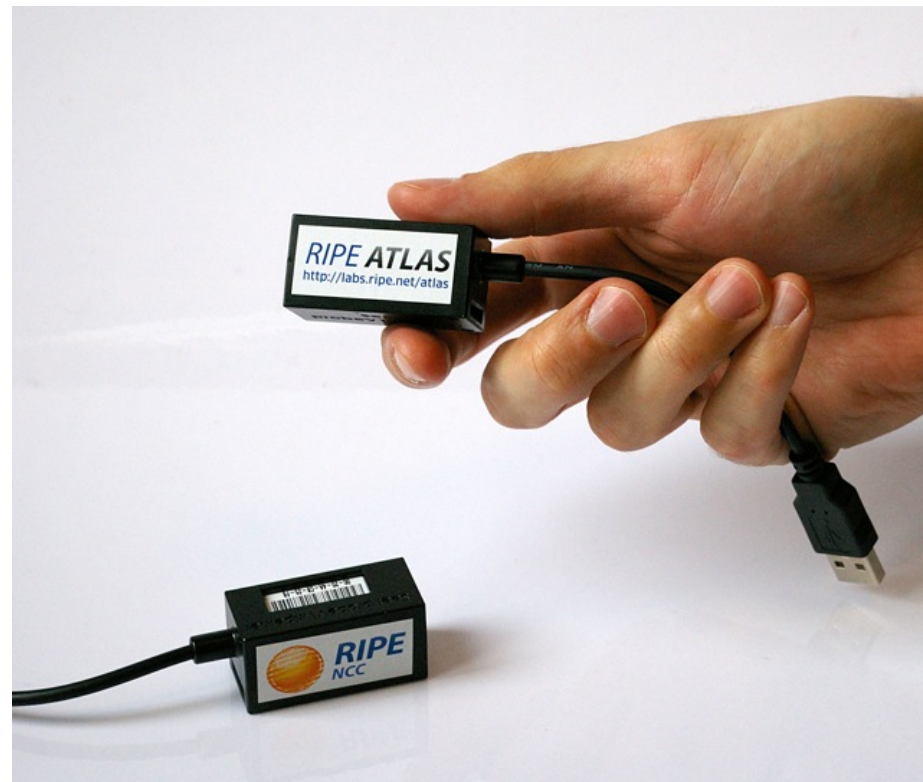
---

- Individual Benefits
  - Less expensive than rolling your own
  - More vantage points available
  - More data available
- Community Benefits
  - Unprecedented situational awareness
  - Wealth of data, ...

# Intuition -> Plan

---

- For accurate maps we need more probes
- Deploying very many TTM boxes too expensive
- Smaller probes
- Easily deployable
- USB powered
- 24 x 365 capable





# Probe Deployments



# Versions

---

- Version 0
  - Ping to fixed targets (IPv4 & IPv6) ✓
  - Traceroute to 1<sup>st</sup> two upstream hops ✓
- Version 1 (beta with selected testers this month)
  - Ping & Traceroute to variable targets
  - DNS queries to variable targets
- Version 2
  - Your ideas?
- A non-goal: last-mile performance measurements

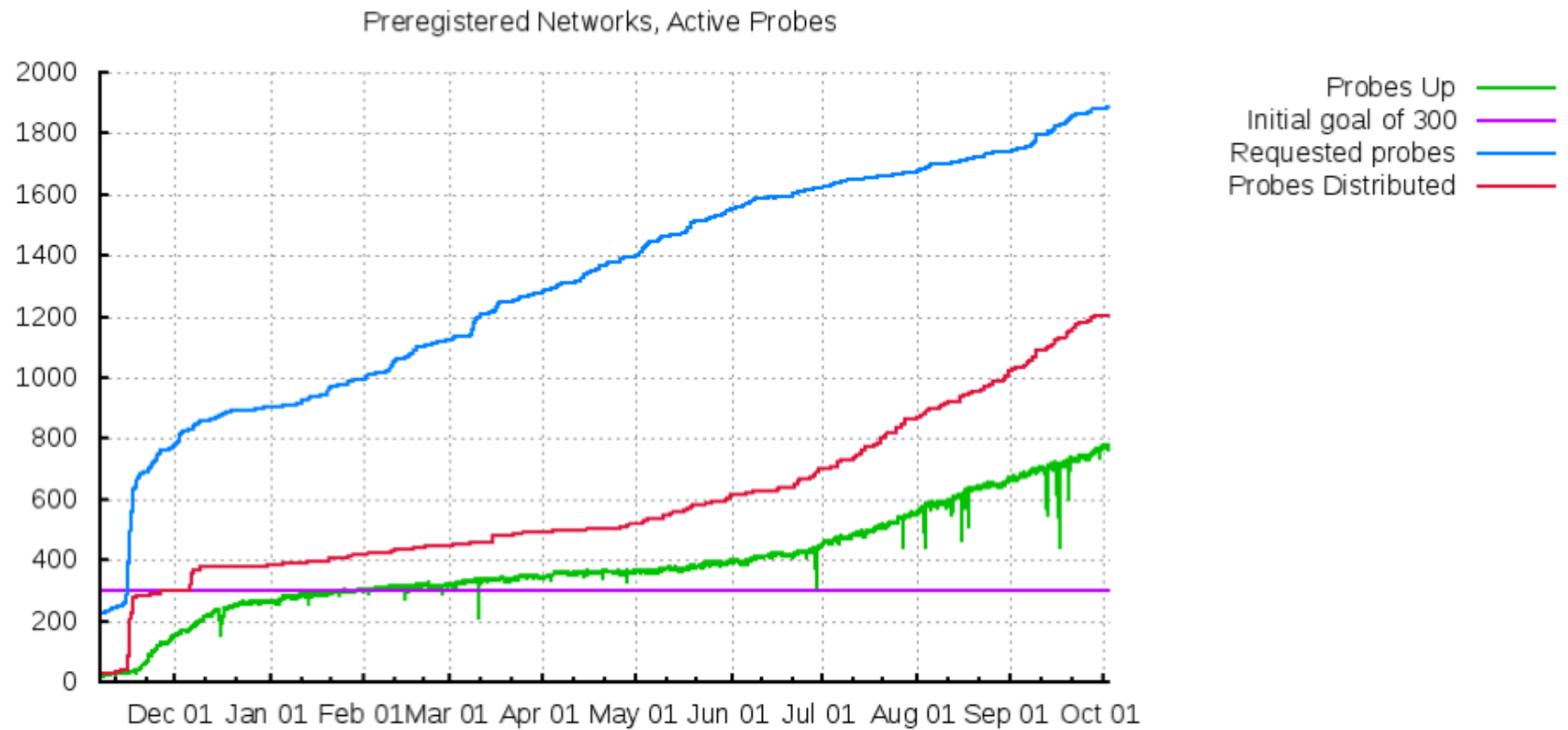
# Probes Deployed Today



# Probes Deployed Today



# Probes Deployed Today



# Hosting = Credits = Measurements

---

- We cannot be everywhere without your help

## Become a probe host!

- Donate a fraction of your bandwidth
- Donate a very small amount of electricity

You get:

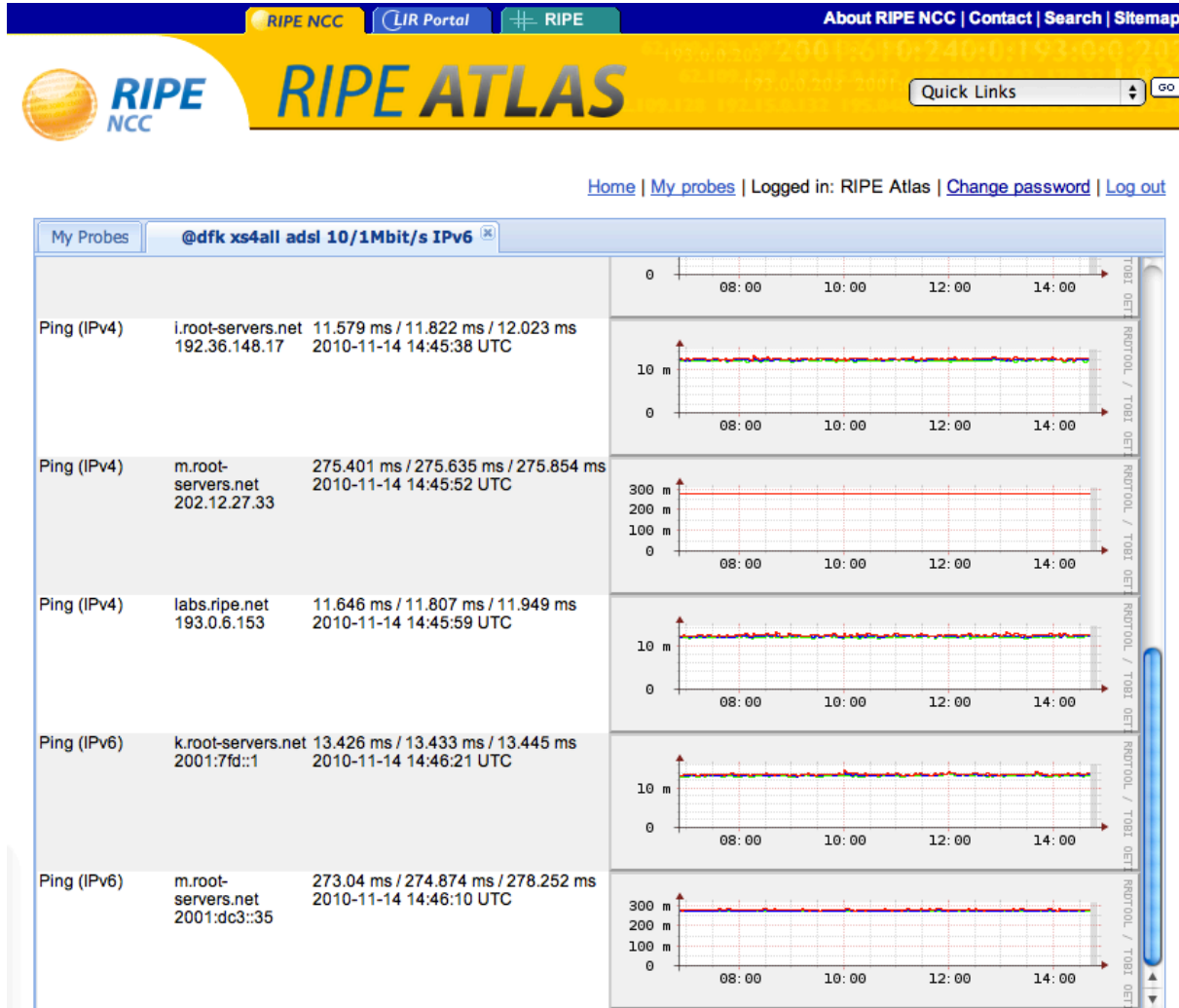
- Recognition
- Access to fixed measurements from your probe
- Credits = Measurements **from any probe** (Q3/11)

# Sponsorship = Credits = Measurements

Credits – a “measurement ecosystem”?

- Hosting a probe or sponsoring will earn you credits
- Scheduling your own measurements will cost credits
  - Simpler measurements are cheaper
  - More complex or more frequent measurements cost more

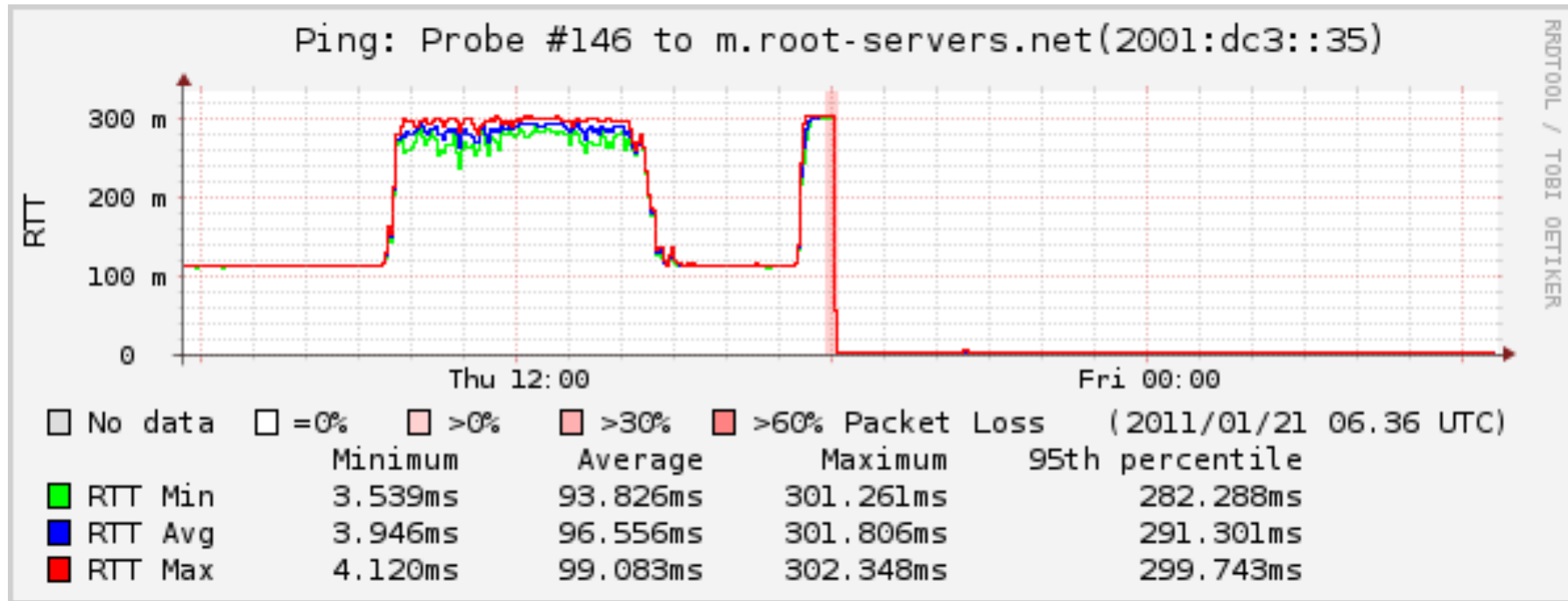
# What you see is what you get



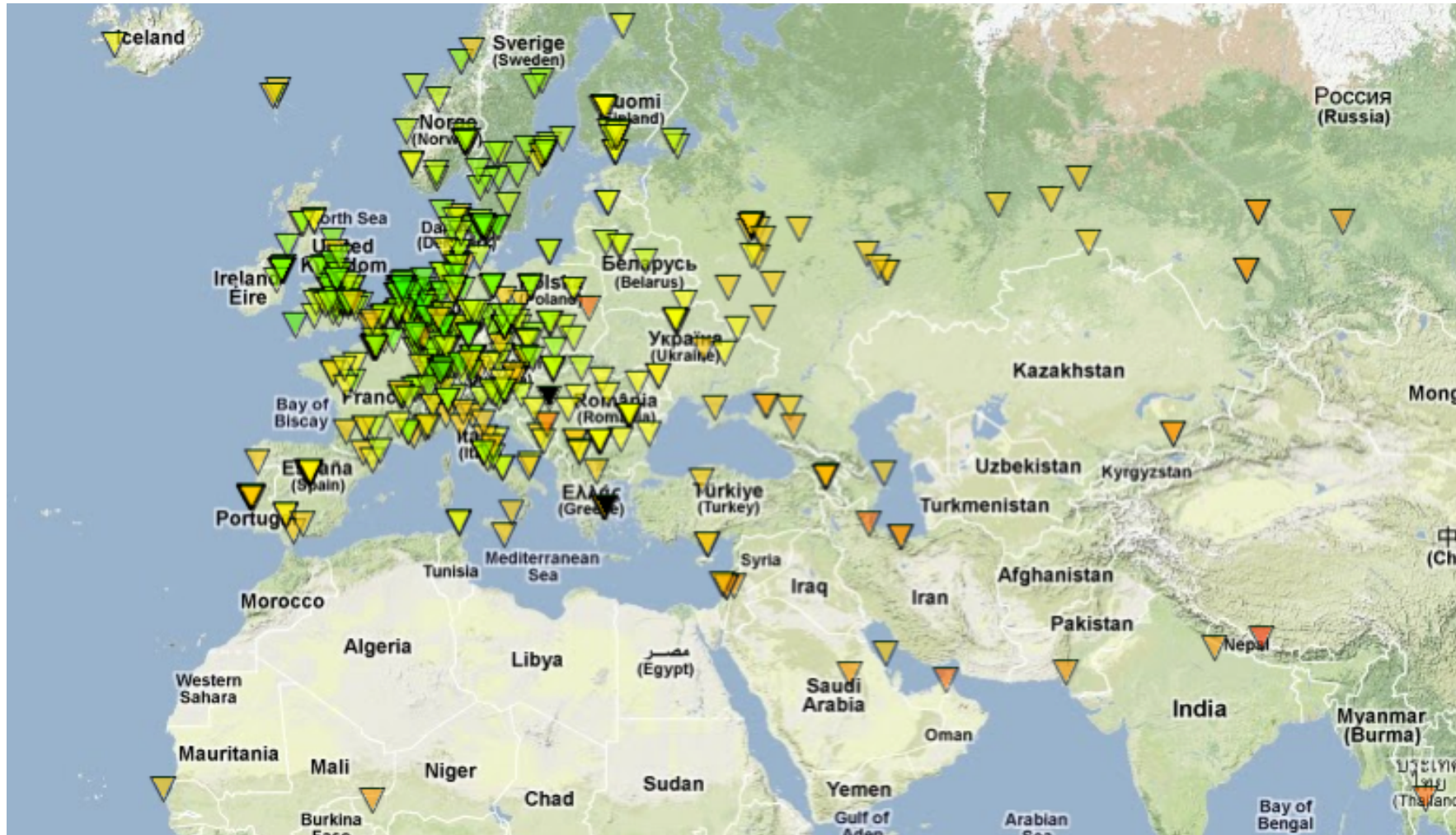
About RIPE NCC | Service Announcements | Site Map | LIR Portal | About RIPE | Contact | Legal | Copyright Statement



# What you see is what you get



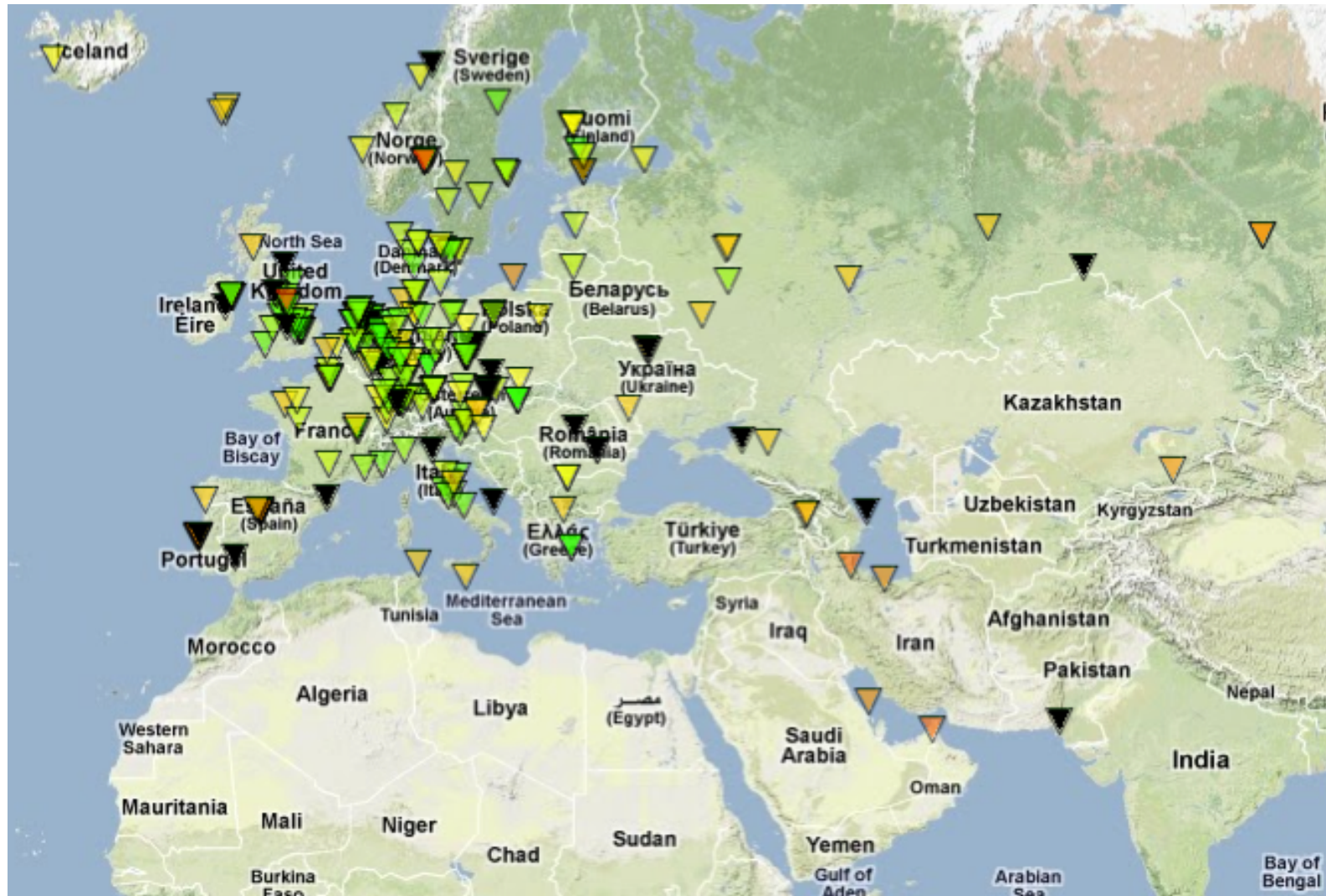
# How we see labs.ripe.net (IPv4 RTT)



# How we see k.root-servers.net (IPv4 RTT)



# How we see k.root-servers.net (IPv6 RTT)



# Sponsorship = Credits = Measurements

- 50k probes too expensive for RIPE NCC alone
- Sponsorship Plans:

2K €	8 probes
4K €	16 probes
	...
64K €	256 probes

- Recognition and **many more credits**
- Access to fixed measurements from probes **s** now
- Credits = Measurements **from any probe** (Q4/11)

# Sponsorship = Credits = Measurements

- 50k probes too expensive for RIPE NCC alone
- Sponsorship Plans:

that is 2048€<sup>SM</sup>

2K €	8 probes
4K €	16 probes
...	...
64K €	256 probes

- Recognition and **many more credits**
- Access to fixed measurements from probes **s** now
- Credits = Measurements **from any probe** (Q3/11)

# Measurement nodes – “Probes”

---

- Probe (v1 / generation 1):
  - Lantronix XPortPro
  - Very low power usage
  - 8MB RAM, 16MB flash
  - Runs uClinux
  - No FPU, no MMU, virtually no UI
  - A reboot costs <15 (<5) seconds
  - An SSH connection costs ~30 seconds
  - We can remotely update the firmware
  - Form factor of the finished probe is “just right”



# RIPE Atlas - Security aspects

---

- Probes have hardwired trust material (registration server addresses / keys)
- The probes don't have any open ports, they only initiate connections
  - This works fine with NATs too
- Probes don't listen to local traffic, there are no passive measurements running
  - There's no snooping around



# Today's Topics

---

- RIPEstat
- RIPE Atlas

# RIPE NCC Measurement Tools

---

- Tools for YOU
- Please support us by
  - Using the tools
  - Giving us feedback and ideas
  - Telling your friends about them
  - Finding sponsors for RIPE Atlas

Questions?

